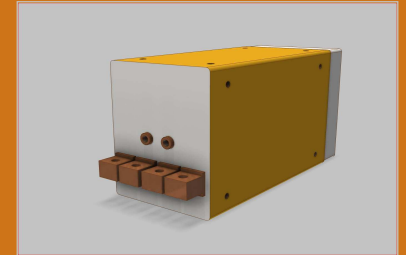
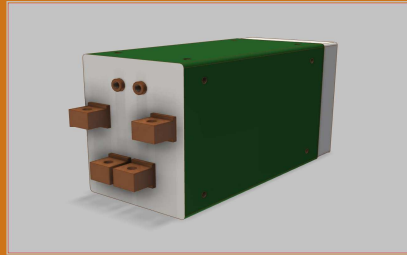


Welding transformers

AC Multi spot welding

Transformers

DIN Norms



KVA At 50% DC	kA At 100% DC	Secondary voltage	Dimensions (mm)	Weight (Kg)
25	5	2,5-3,6	184×235×355	53
40	5,6	3,6-5	184×235×400	66
63	6,3	5-7,1	184×235×450	82
100	7,1	7,1-10	184×235×560	113
125	8,4	7,3-10,5	184×235×605	133
150	9,1	9.3-11,5	197×260×621	160

AC Machine

Transformers

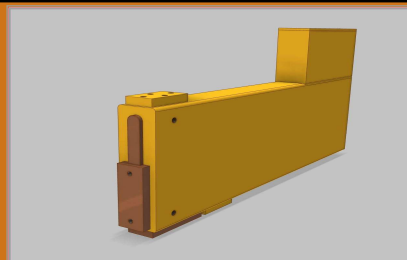


KVA At 50% DC	kA At 100% DC	Secondary voltage	Dimensions (mm)	Weight (Kg)
25	5	2,5-3,6	184×235×355	53
40	5,6	3,6-5	184×235×400	66
63	6,3	5-7,1	184×235×450	82
100	7,1	7,1-10	184×235×560	113
125	8,4	7,3-10,5	184×235×605	133
150	9,1	9.3-11,5	197×260×621	160

AC Special

Transformers

On Request



DC and MF

Transformers

On Request

